

HDC(161)-MKS/IU/2023/154 :ނަންބަރު

**އިދާރާތަކ**

**ހުށަހަޅާ ބަންދު 2-02 ގެ ފޯމު ލިބޭގައި އިދާރާތަކ ހުށަހަޅާ ފޯމު:**

މި ހުށަހަޅާ ބަންދު 2-02 ގެ ފޯމު ލިބޭގައި އިދާރާތަކ ހުށަހަޅާ ފޯމު: HDC(161)-MKS/IU/2023/151 (02 ވަނަ ބަންދު 2023) ގެ ފޯމު ފިލުވާނެ.

ހުށަހަޅާ ބަންދު 2-02 ގެ ފޯމު ލިބޭގައި އިދާރާތަކ ހުށަހަޅާ ފޯމު ހުށަހަޅާ ފޯމު ލިބޭގައި އިދާރާތަކ ހުށަހަޅާ ފޯމު ފިލުވާނެ. ފޯމު ލިބޭގައި އިދާރާތަކ ހުށަހަޅާ ފޯމު ފިލުވާނެ. ފޯމު ލިބޭގައި އިދާރާތަކ ހުށަހަޅާ ފޯމު ފިލުވާނެ. ފޯމު ލިބޭގައި އިދާރާތަކ ހުށަހަޅާ ފޯމު ފިލުވާނެ.

ބަންދު ލިބޭގައި ހުށަހަޅާ (ފޯމު)	ބަންދު ލިބޭގައި ހުށަހަޅާ	ބަންދު ލިބޭގައި ހުށަހަޅާ
10 x 10	Unit 1, Unit 2, Unit 3, Unit 4, Unit 5, Unit 6, Unit 7, Unit 8, Unit 9, Unit 10	10

ފޯމު ލިބޭގައި އިދާރާތަކ ހުށަހަޅާ ފޯމު ފިލުވާނެ. ފޯމު ލިބޭގައި އިދާރާތަކ ހުށަހަޅާ ފޯމު ފިލުވާނެ.

ހުށަހަޅާ	ބަންދު ލިބޭގައި ހުށަހަޅާ	ފޯމު ލިބޭގައި ހުށަހަޅާ
ހުށަހަޅާ ފޯމު ލިބޭގައި އިދާރާތަކ ހުށަހަޅާ ފޯމު ފިލުވާނެ. ފޯމު ލިބޭގައި އިދާރާތަކ ހުށަހަޅާ ފޯމު ފިލުވާނެ.	ބަންދު ލިބޭގައި ހުށަހަޅާ: 15 ވަނަ ބަންދު 2022 (ފޯމު) ކޮންމެ ދުވަހު 09:30 ގައި 11:00 ގައި ހުށަހަޅާ	ފޯމު ލިބޭގައި ހުށަހަޅާ
ފޯމު ލިބޭގައި އިދާރާތަކ ހުށަހަޅާ ފޯމު ފިލުވާނެ. ފޯމު ލިބޭގައި އިދާރާތަކ ހުށަހަޅާ ފޯމު ފިލުވާނެ.	ބަންދު ލިބޭގައި ހުށަހަޅާ: 15 ވަނަ ބަންދު 2022 (ފޯމު) ފޯމު ލިބޭގައި ހުށަހަޅާ ފޯމު ފިލުވާނެ.	ފޯމު ލިބޭގައި ހުށަހަޅާ

މި ހުށަހަޅާ ބަންދު 2-02 ގެ ފޯމު ލިބޭގައި އިދާރާތަކ ހުށަހަޅާ ފޯމު ފިލުވާނެ.

ފޯމު ލިބޭގައި އިދާރާތަކ ހުށަހަޅާ ފޯމު ފިލުވާނެ. [www.hdc.com.mv](http://www.hdc.com.mv)

ފޯމު ލިބޭގައި އިދާރާތަކ ހުށަހަޅާ ފޯމު ފިލުވާނެ. <https://properties.hdc.com.mv/> ގައި ފޯމު ލިބޭގައި އިދާރާތަކ ހުށަހަޅާ ފޯމު ފިލުވާނެ. 1516 ނަންބަރު ގައި ފޯމު ލިބޭގައި އިދާރާތަކ ހުށަހަޅާ ފޯމު ފިލުވާނެ.

20 ވަނަ ބަންދު 2023.  
12 ވަނަ ބަންދު 2023.



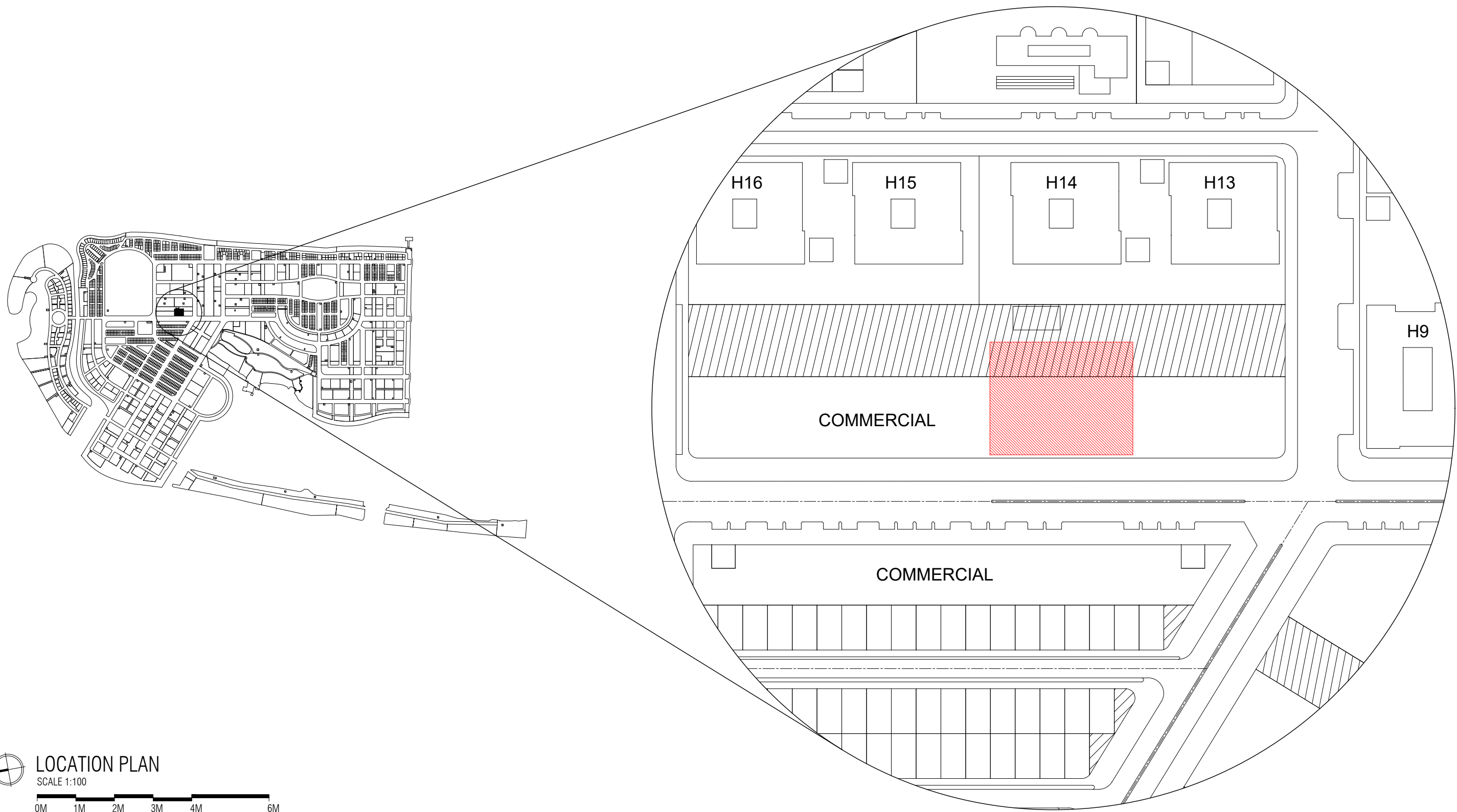
Sobanuf

# TEMPORARY MARKET AT HIYA AREA

CONSTRUCTION DRAWINGS

27 FEBRUARY 2022





DOCUMENT ID	XXXXX-SSSS-YYYY-(NUMBER)	VERSION	1
DOCUMENT NAME	TEMPORARY MARKET AT HIYA AREA	REVISION	0
AUTHOR	AHMED ANSADH	CREATED DATE	27/02/2023
LAST UPDATED BY	AHMED ASNADH	LAST UPDATED DATE	27/02/2023
REVIEWED BY	SAEED ADAM	REVIEWED DATE	27/02/2023
APPROVED BY	ISMAIL SHAN RASHEED	APPROVED DATE	27/02/2023
INFORMATION CLASSIFICATION SCHEME	(Public, Open, Confidential, Confidential & Sensitive and Secret)		

REVISION HISTORY			
VER.	DATE	REV.	REVISION
X	DD/MM/YYYY	Z	(DRAFT)
X	DD/MM/YYYY	Z	(FEEDBACK FORMS INCLUDED)
X	DD/MM/YYYY	Z	(MODIFIED FEEDBACK FORMS)
X	DD/MM/YYYY	Z	(REFORMATTED FEEDBACK FORM)

<b>ARCHITECT</b>	AHMED ASNADH
<b>STRUCTURAL ENG.</b>	MARIYAM SUNAINA MOAHMED
<b>MECHANICAL ENG.</b>	NAME
<b>ELECTRICAL ENG.</b>	NAME
<b>SCALE</b>	AS GIVEN

SHEET CONTENT
LOCATION PLAN

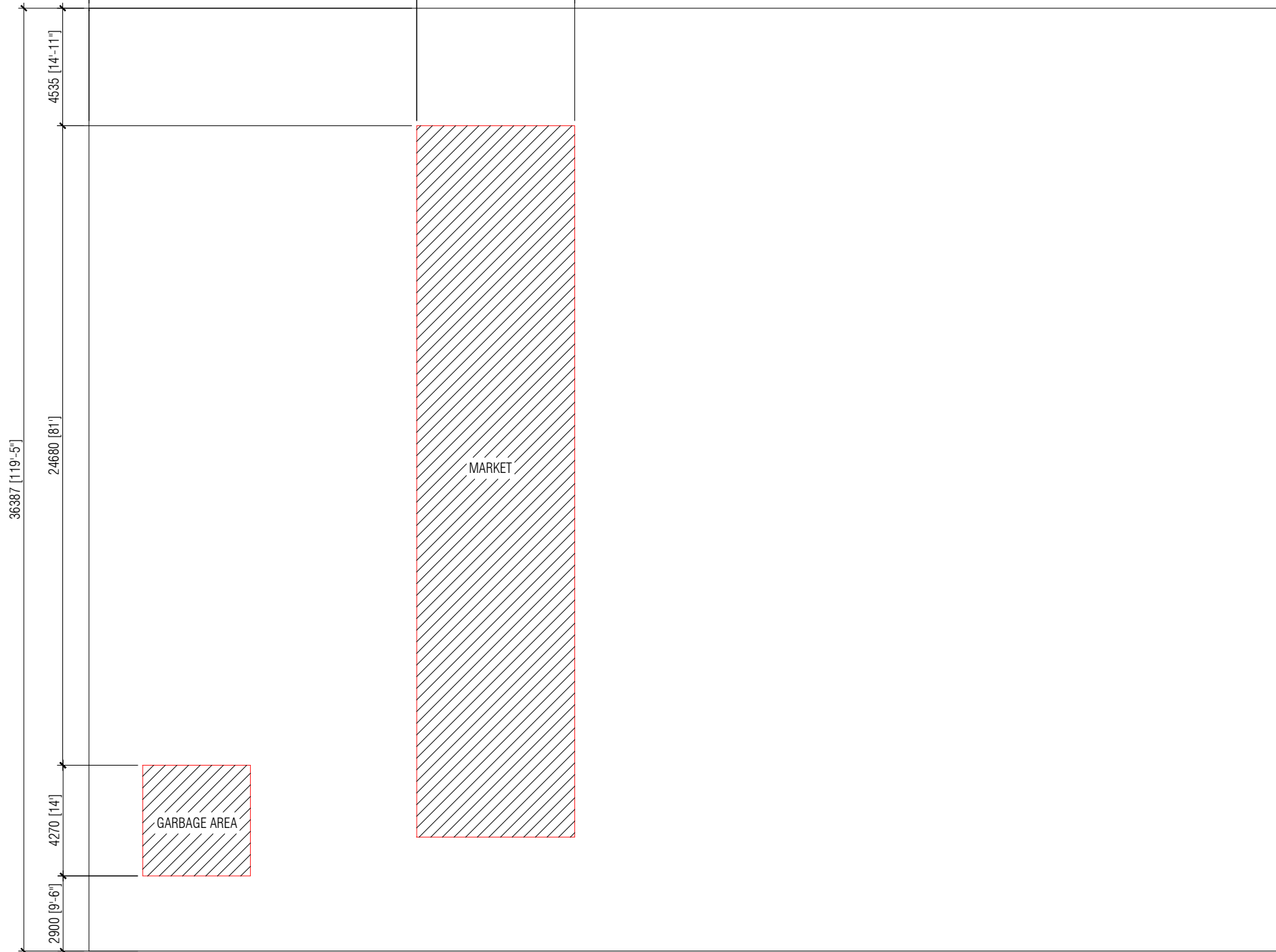
HIYA FLATS

46175 [151'-6"]

12655 [41'-6"]

6100 [20']

27420 [90']



MIXED-USE COMMERCIAL & PARKING

MIXED-USE COMMERCIAL & PARKING

TEMP-397  
 AREA: 1,680.10 SQM, 18,084.43 SQFT  
 BUILT-UP AREA: 167.44SQM, 1802.31SQFT

GARBAGE AREA

MARKET



SITE PLAN  
 SCALE 1:200



HITHIGAS MAGU



TEMPORARY MARKET  
 HULHUMALE'

PLANNING AND DEVELOPMENT DEPARTMENT  
 THIRD FLOOR, HDC BUILDING HULHUMALE'  
 REPUBLIC OF MALDIVES  
 TEL. +(960)3353535, FAX +(960)3358892  
 EMAIL : planning@hdc.com.mv

The drawings, concept and design contained are the properties of HDC. Use of any kind or copy of whole or part of this drawing, concept or design or use on other projects or sites other than that specified on this drawing is strictly prohibited.

DOCUMENT ID	XXXX-SSSS-YYYY-(NUMBER)	VERSION	1
DOCUMENT NAME	TEMPORARY MARKET AT HIYA AREA	REVISION	0
AUTHOR	AHMED ANSADH	CREATED DATE	27/02/2023
LAST UPDATED BY	AHMED ASNADH	LAST UPDATED DATE	27/02/2023
REVIEWED BY	SAEED ADAM	REVIEWED DATE	27/02/2023
APPROVED BY	ISMAIL SHAN RASHEED	APPROVED DATE	27/02/2023
INFORMATION CLASSIFICATION SCHEME	(Public, Open, Confidential, Confidential & Sensitive and Secret)		

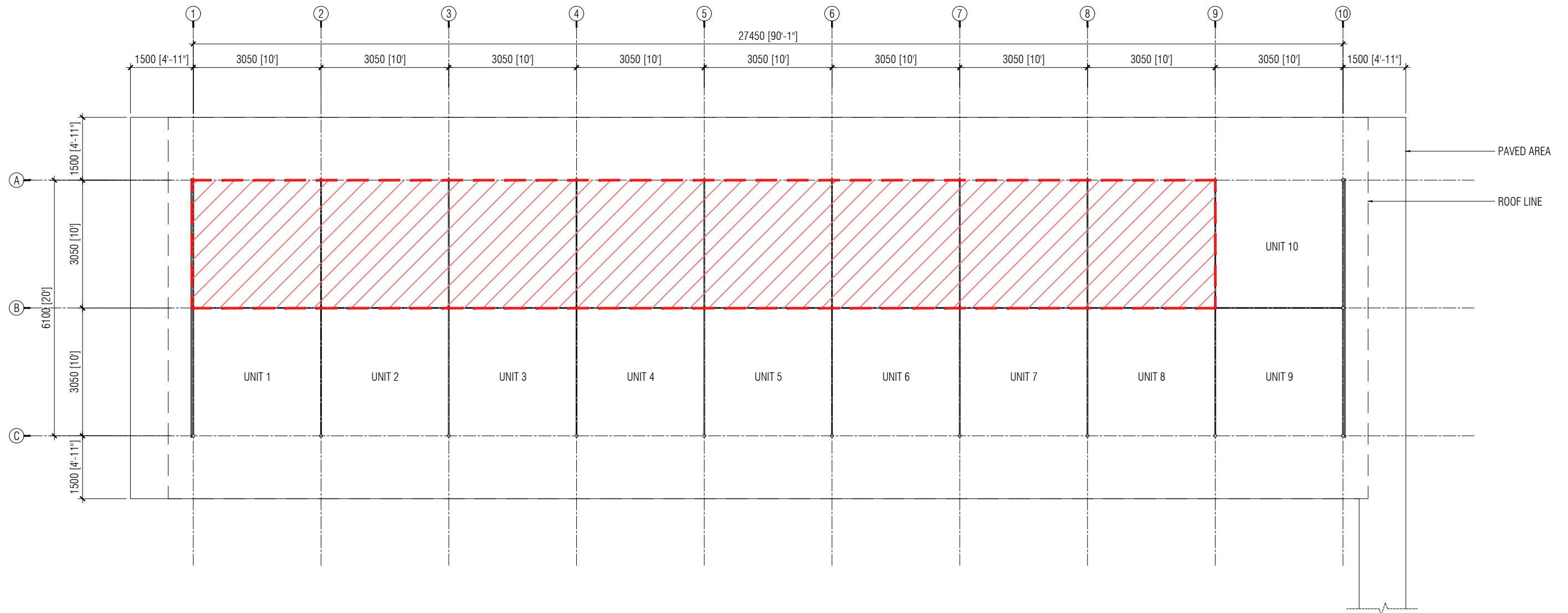
REVISION HISTORY			
VER.	DATE	REV.	REVISION
X	DD/MM/YYYY	Z	(DRAFT)
X	DD/MM/YYYY	Z	(FEEDBACK FORMS INCLUDED)
X	DD/MM/YYYY	Z	(MODIFIED FEEDBACK FORMS)
X	DD/MM/YYYY	Z	(REFORMATTED FEEDBACK FORM)

ARCHITECT	AHMED ASNADH
STRUCTURAL ENG.	MARIYAM SUNAINA MOAHMED
MECHANICAL ENG.	NAME
ELECTRICAL ENG.	NAME
SCALE	AS GIVEN

SHEET CONTENT
SITE PLAN

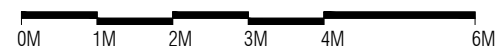
SHEET NO.

A02

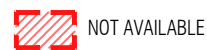


**GROUND FLOOR PLAN**

SCALE 1:100



NOTE:  
 NUMBER OF AVAILABLE UNITS: 10 UNITS  
 UNIT SIZE: 10ft X 10ft




**TEMPORARY MARKET  
 HULHUMALE'**

PLANNING AND DEVELOPMENT DEPARTMENT  
 THIRD FLOOR, HDC BUILDING HULHUMALE'  
 REPUBLIC OF MALDIVES  
 TEL. +(960)3353535, FAX +(960)3358892  
 EMAIL : planning@hdc.com.mv

The drawings, concept and design contained are the properties of HDC. Use of any kind or copy of whole or part of this drawing, concept or design or use on other projects or sites other than that specified on this drawing is strictly prohibited.

<b>DOCUMENT ID</b>	XXXX-SSSS-YYYY-(NUMBER)	<b>VERSION</b>	1
<b>DOCUMENT NAME</b>	TEMPORARY MARKET AT HIYA AREA	<b>REVISION</b>	0
<b>AUTHOR</b>	AHMED ANSADH	<b>CREATED DATE</b>	27/02/2023
<b>LAST UPDATED BY</b>	AHMED ASNADH	<b>LAST UPDATED DATE</b>	27/02/2023
<b>REVIEWED BY</b>	SAEED ADAM	<b>REVIEWED DATE</b>	27/02/2023
<b>APPROVED BY</b>	ISMAIL SHAN RASHEED	<b>APPROVED DATE</b>	27/02/2023
<b>INFORMATION CLASSIFICATION SCHEME</b>	(Public, Open, Confidential, Confidential & Sensitive and Secret)		

REVISION HISTORY			
VER.	DATE	REV.	REVISION
X	DD/MM/YYYY	Z	(DRAFT)
X	DD/MM/YYYY	Z	(FEEDBACK FORMS INCLUDED)
X	DD/MM/YYYY	Z	(MODIFIED FEEDBACK FORMS)
X	DD/MM/YYYY	Z	(REFORMATTED FEEDBACK FORM)

<b>ARCHITECT</b>	AHMED ASNADH
<b>STRUCTURAL ENG.</b>	MARIYAM SUNAINA MOAHMED
<b>MECHANICAL ENG.</b>	NAME
<b>ELECTRICAL ENG.</b>	NAME
<b>SCALE</b>	AS GIVEN

SHEET CONTENT	
GROUND FLOOR PLAN	

<b>SHEET NO.</b>	A03
------------------	-----