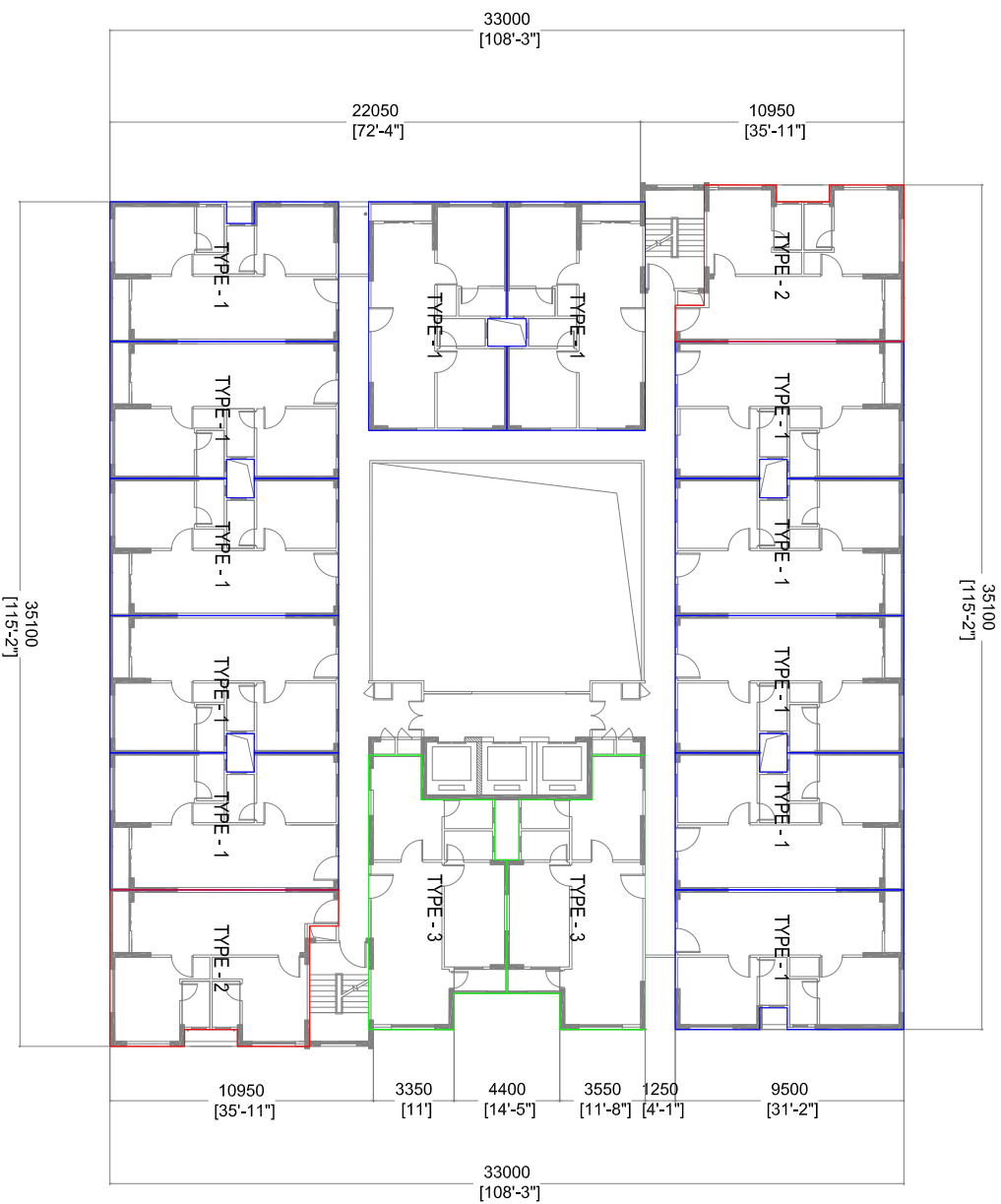


# HIYA 7000 HOUSING - 16 UNITS BUILDING



HIYA 7000 HOUSING - 16 UNITS

TYPE 1 - 53,223 sqm / 572,96 sqft

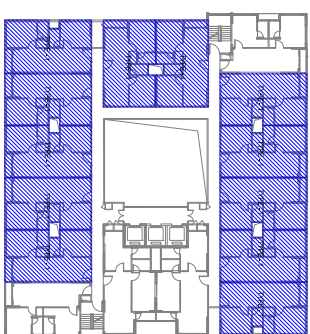
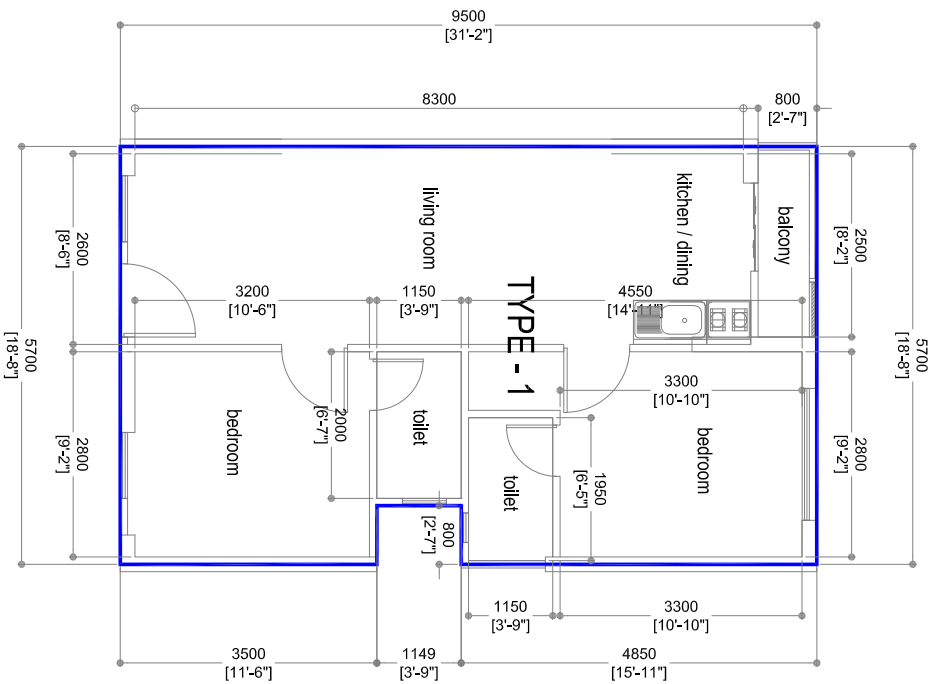
TYPE 2 - 54,21 sqm / 583,51 sqft

TYPE 3 - 54,45 sqm / 586,09 sqft

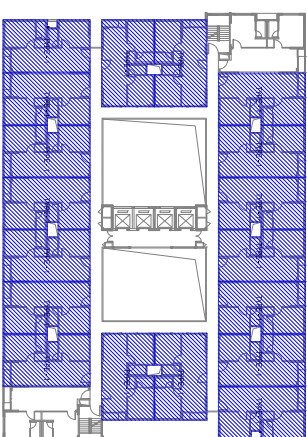
SCALE: 1:300



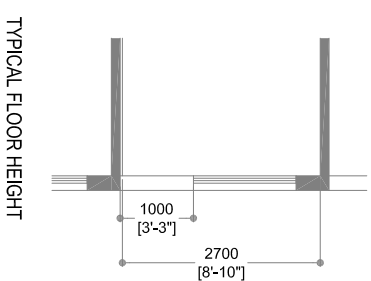
# UNIT TYPE - 1



16 UNITS BUILDING



20 UNITS BUILDING



TYPICAL FLOOR HEIGHT

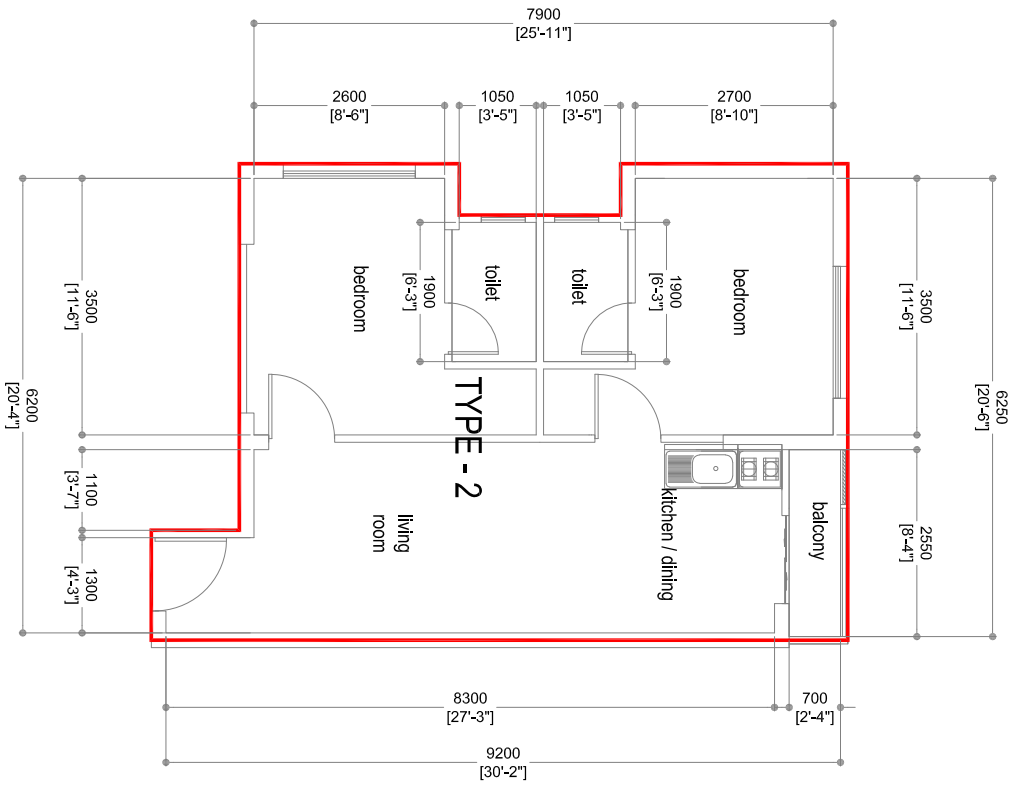
DETAIL DRAWING

UNIT TYPE - 1 : 53.23 m<sup>2</sup> (572.96 ft<sup>2</sup>)

SCALE: 1:100

THE MEASUREMENTS MENTIONED ABOVE  
MIGHT BE SUBJECT TO SLIGHT CHANGES  
ONCE AN AS-BUILT HAS BEEN TAKEN

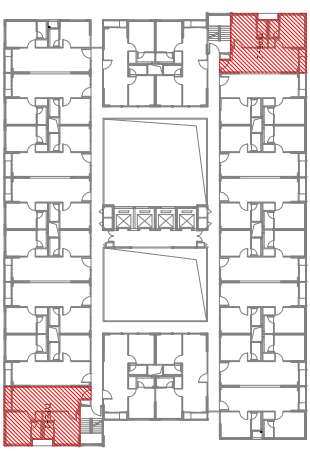
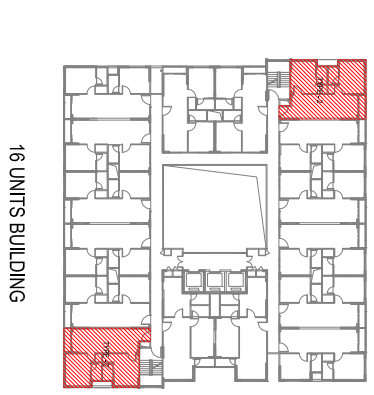
# UNIT TYPE - 2



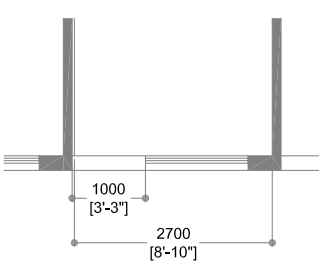
DETAIL DRAWING

UNIT TYPE - 2 : 54,21 m<sup>2</sup> (583,51 ft<sup>2</sup>)

SCALE: 1:100

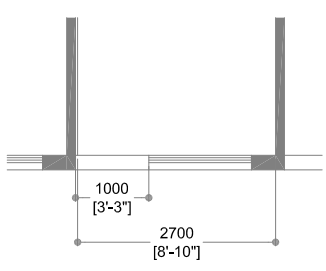
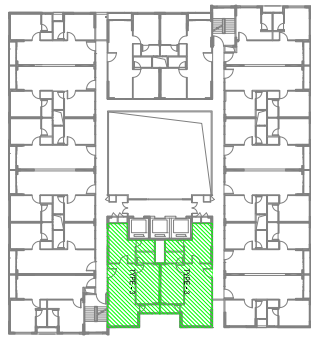
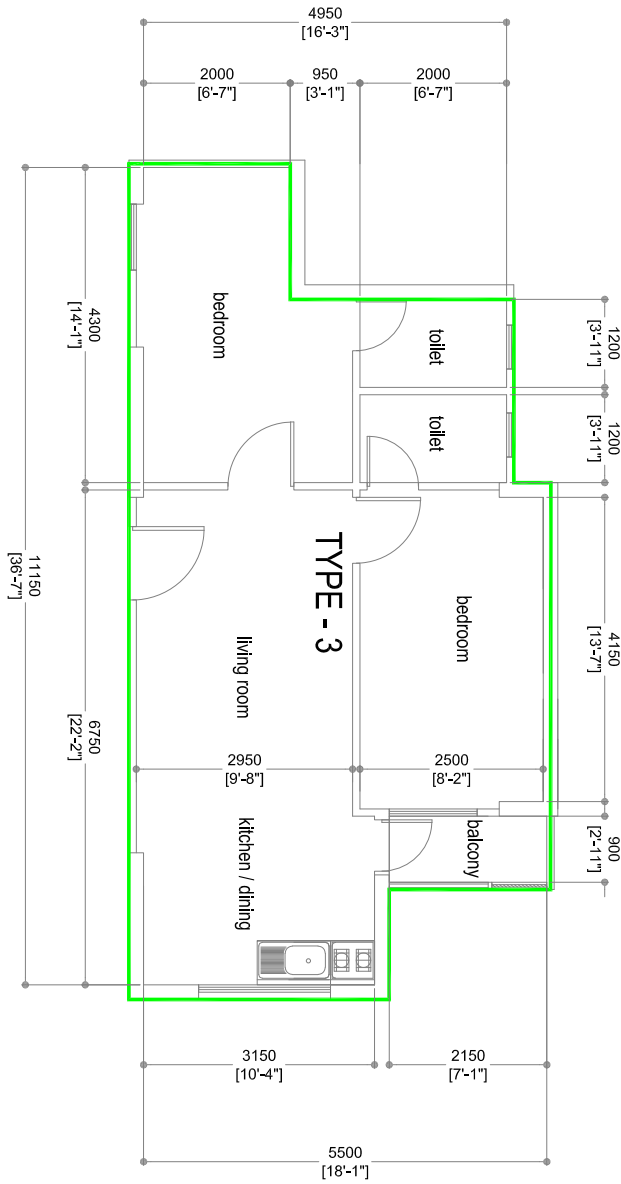


TYPICAL FLOOR HEIGHT



THE MEASUREMENTS MENTIONED ABOVE MIGHT BE SUBJECT TO SLIGHT CHANGES ONCE AN AS-BUILT HAS BEEN TAKEN

# UNIT TYPE - 3



DETAIL DRAWING

UNIT TYPE - 3 : 54.45 m<sup>2</sup> (586.09 ft<sup>2</sup>)

SCALE: 1:100

THE MEASUREMENTS MENTIONED ABOVE MIGHT BE SUBJECT TO SLIGHT CHANGES ONCE AN AS-BUILT HAS BEEN TAKEN