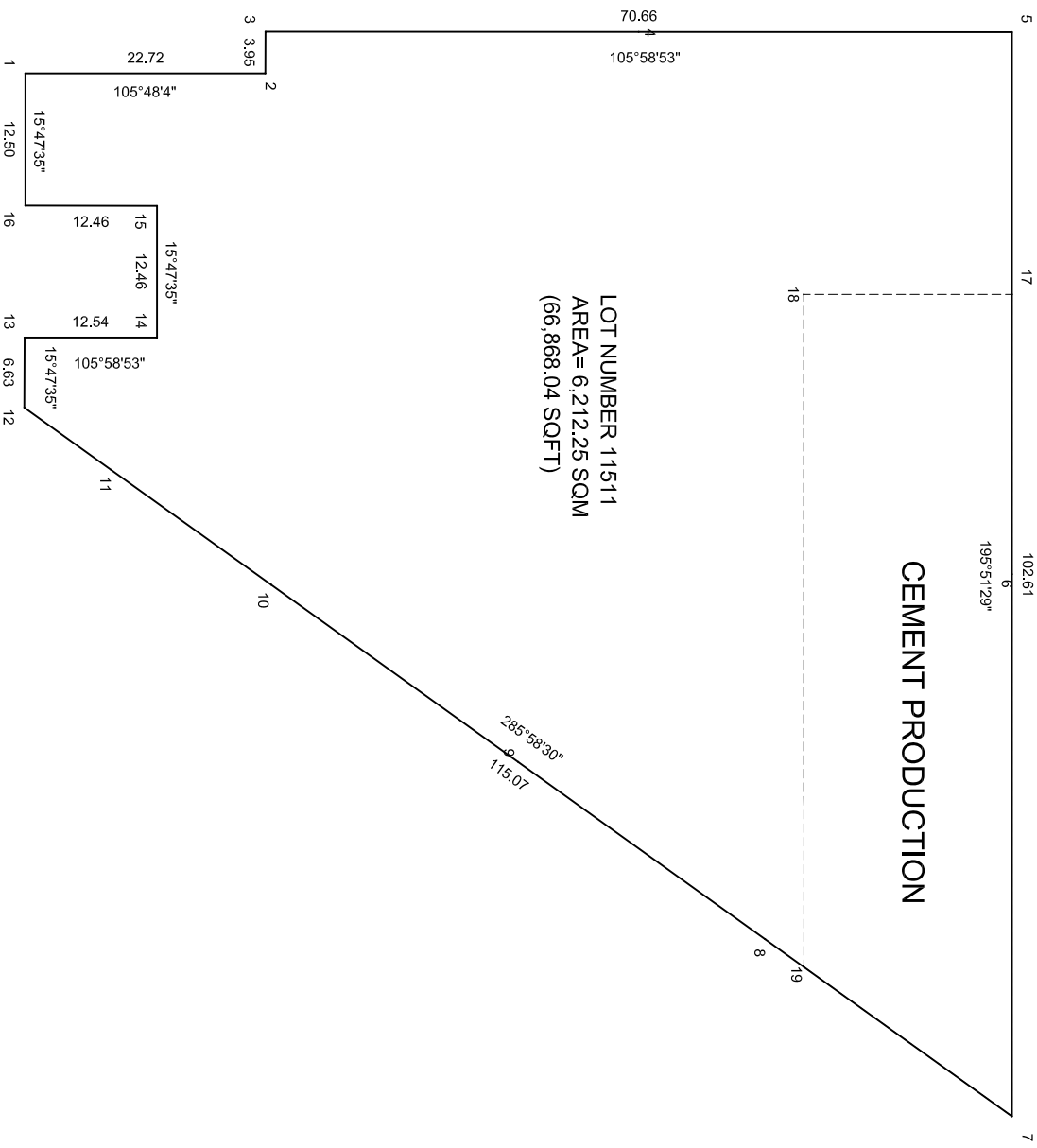


CEMENT PRODUCTION

LOT NUMBER 11511
 AREA= 6,212.25 SQM
 (66,868.04 SQFT)



#	E	N
1	337779.1928	464812.7163
2	337801.0509	464806.5307
3	337802.1461	464810.3287
4	337836.1367	464800.6890
5	337870.1273	464791.0494
6	337856.1569	464741.6812
7	337842.1864	464692.3131
8	337824.2624	464714.8128
9	337806.3383	464737.3124
10	337788.4143	464759.8121
11	337776.7928	464774.4004
12	337770.4903	464782.3117
13	337772.3132	464788.6815
14	337784.3770	464785.2676
15	337787.7705	464797.2591
16	337775.7891	464800.6887
17	337863.3672	464767.1607
18	337844.3981	464772.5277
19	337844.3981	464772.5277

PROJECT: NEW MSO

DRAWING: PLOT MAP

Scale: N:1.5
 Drawn by: Jilian

Checked by: Akram

Date: 28th February 2017

Remarks:



HOUSING DEVELOPMENT CORPORATION
 PLANNING AND DEVELOPMENT DEPARTMENT
 3RD FLOOR, HDC BUILDING HULHUMALE
 REPUBLIC OF MALDIVES
 TEL.: +960(3)353535, FAX: +960(3)358892
 EMAIL: planning@hdc.com.mv